

LONDON NEIGHBOURHOODS

MAYFAIR

Sample Itinerary

LONDON
CONVENTION BUREAU

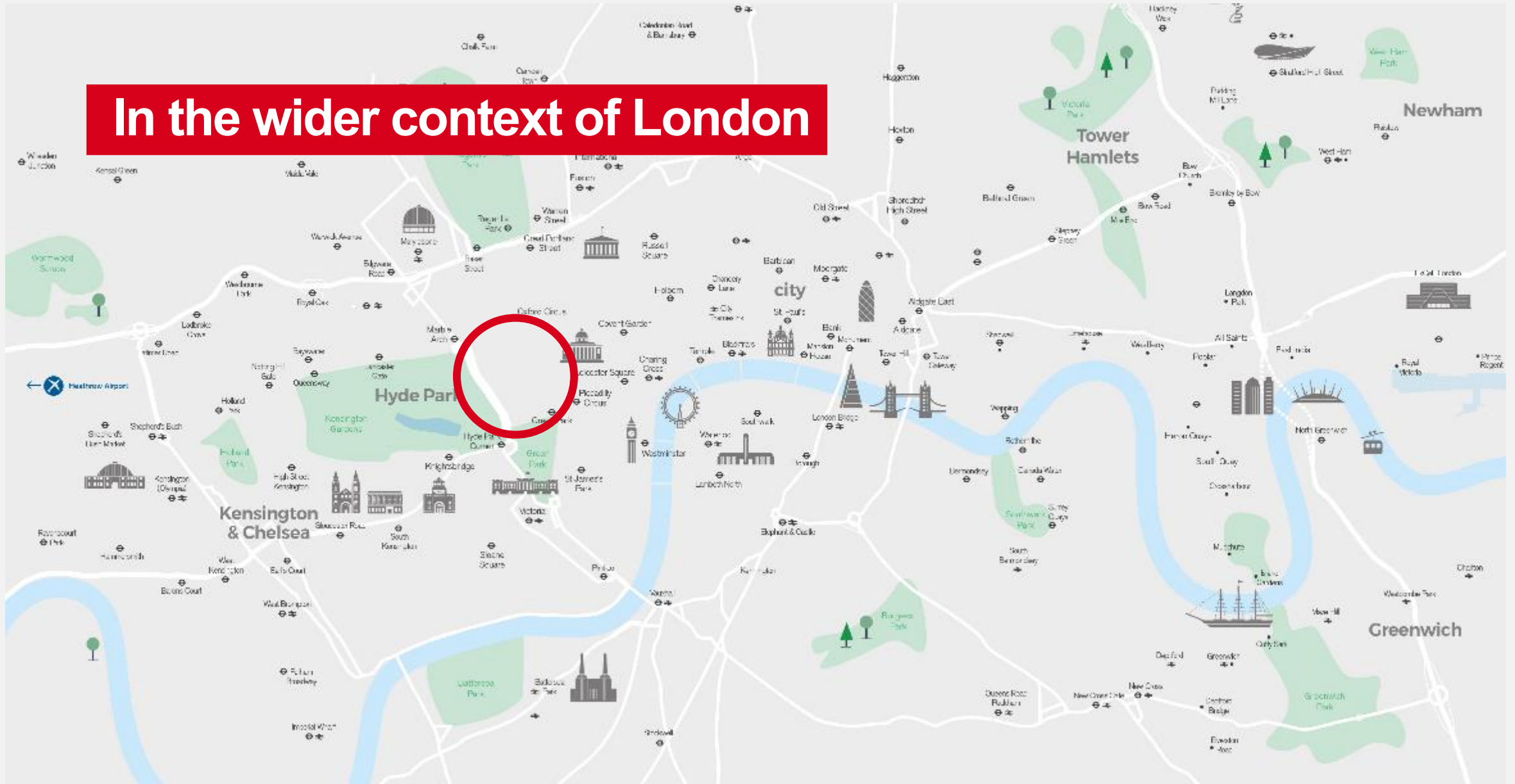
Mayfair

Close to three of London's most exquisite parks – Hyde Park, Green Park and St. James's Park is the elegant district of Mayfair.

Famous for its high-end restaurants and shops, this is a fine location to host a luxury incentive business event.



In the wider context of London



Getting there: JW Marriott Grosvenor House London

Heathrow Airport

57 minutes – public transport

45 minutes – car

City Airport

40 minutes – car

Gatwick Airport

48 minutes – public transport

Eurostar at St. Pancras International

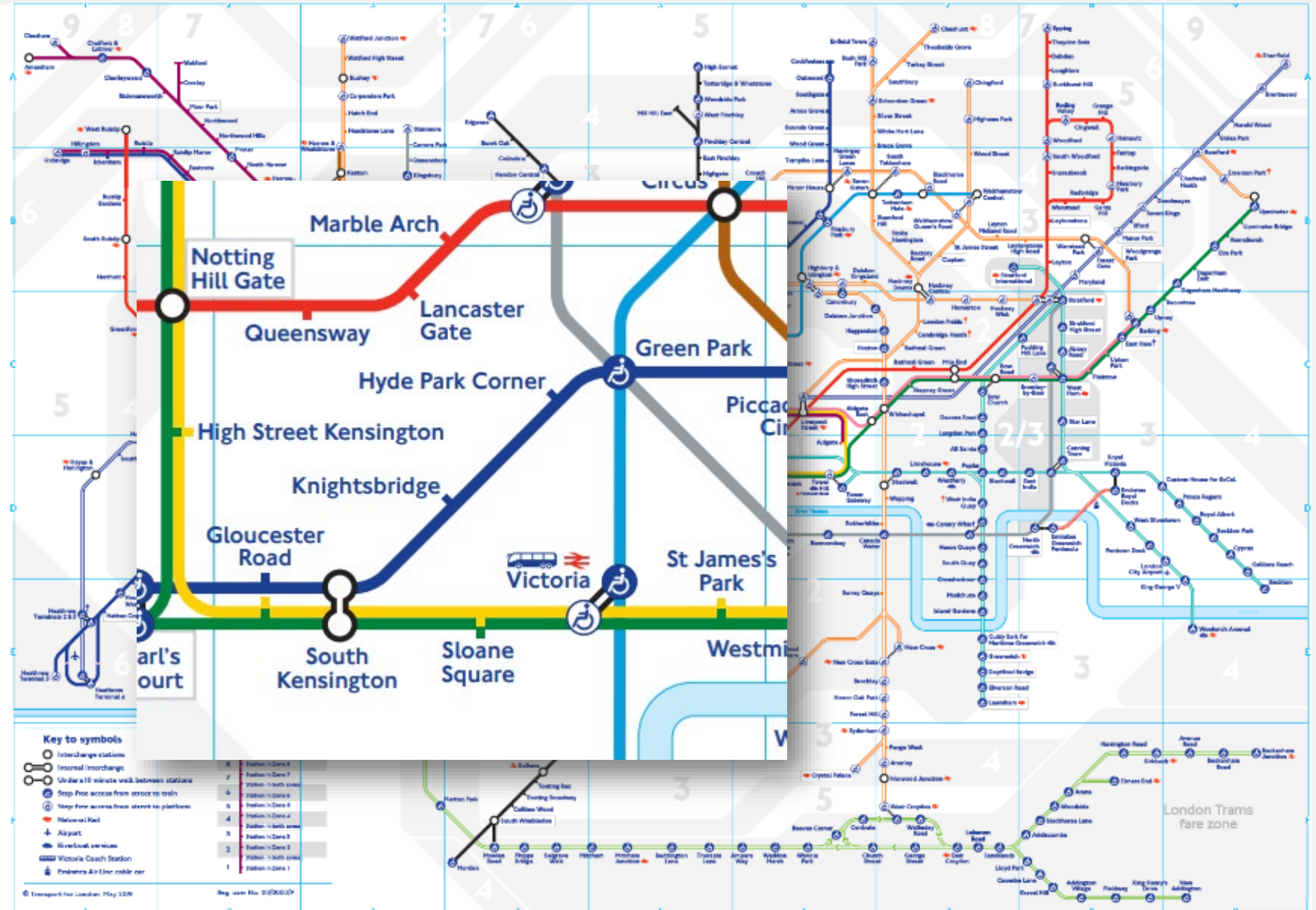
20 minutes – public transport



Tube map

Fare zone 1

Closest tube stations: Marble Arch and Hyde Park Corner



Venues

The Linnean Society of London

Flexible spaces in the beautiful courtyard of Burlington House.

The London Library

Views across St James's Square, double-height, book-lined walls and elegant ironwork.

Royal Automobile Club

Host your delegates in the club house with stunning décor, fine art and a motoring heritage.

Spencer House

Eighteenth century private palace with spaces up to 450 capacity.



Hotels



London Marriott Grosvenor Square

Experience 5-star service, minutes away from Hyde Park and iconic landmarks.



The Stafford, London

Timeless luxury in the heart of Mayfair.



The May Fair Hotel

A luxurious getaway with elegant suites, first opened in 1927.

JW Marriott Grosvenor House London

A truly iconic hotel ideally located in the heart of Mayfair. First opened in 1929 and overlooking Hyde Park, the hotel offers authentic experiences inspired by a unique location. From the flourishing designer shopping district of Mayfair, to some of the world's most renowned art collections and museums with outstanding royal palaces and cultural attractions nearby.



Activities



St. James's Street Walking Tour

Explore historic St James behind some of London's grandest houses, shops and palaces.



Burlington Arcade

Discover one of the most beautiful covered shopping streets in Britain.



Savile Row

This is the place to go for a new suit, as this shopping street is known for traditional men's bespoke tailoring!

Activities



Galleries

Discover some of the world's greatest artists in Mayfair's galleries.



Royal Academy of Arts

Step inside a new home for art and ideas.



Casino

There are dozens of fantastic casinos spread across the city, for both high-rollers and newcomers alike.

Mayfair's parks



St. James's Park

A 23-hectre park which includes the Mall and Horse Guards parade.



Hyde Park

A grade I-listed park, the largest in central London. Features Kensington Palace, The Serpentine Galleries and lakes.



Green Park

Landscaped in 1820 and notable among central London parks for having no lakes or buildings.

Restaurants

Heddon Street Kitchen

Just off Regent Street, explore Gordon Ramsay's culinary experience.

Sketch

A quirky, trendy gastro-brasserie with breath-taking interior.

Park Chinois

A luxury Chinese restaurant with live entertainment inspired by the glamour of 1930s Shanghai supper clubs and cabarets.



Sketch



Heddon Street Kitchen



**Three day sample
itinerary – incentive
trip**

Day 1

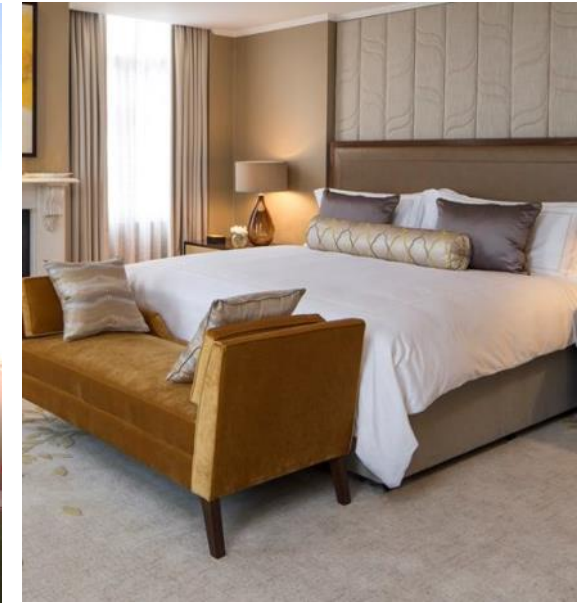
10:30: check into the iconic, 350-bedroom Marriott Grosvenor House.

12:30: networking lunch.

14:00: kick-off meeting in one of their 23 event rooms.

18:00: private dining at Wellington Arch on Hyde Park Corner.

21:00: post-dinner drinks at Red Bar at Marriott Grosvenor House with its famous red décor.

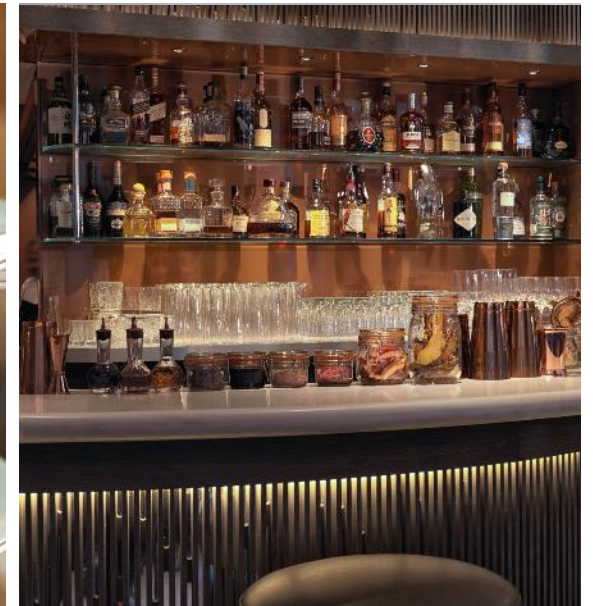


Day 2

09:00: discover London's history by bike, cycling past sites such as: Buckingham Palace, Kensington Palace and the Princess Diana Memorial

13:00: a traditional British pastime, indulge in afternoon tea in one of Mayfair's luxury hotels

19:30: get exclusive access to one of Mayfair's many private members clubs, such as Annabel's, the Arts Club or the "Palace of Pleasure", Home House, an 18th century venue oozing with elegance.



Day 3

Morning: take advantage of free time and enjoy some shopping.

Private shopping and activities can be arranged whether it is tea tasting at Fortnum & Mason, in-house fragrance profiling at one of the perfumeries in the Burlington Arcade, buying tailor-made boots and shoes at Lobb's or shop for a hat at Lock & Co.

Afternoon: Check-out and depart





**From £449
per room
per night**

Rates

JW Marriott Grosvenor House London

- Two-course lunch, including tea, coffee and a glass of champagne for two
- Room for two with breakfast
- Meeting room for half-day including tea and coffee for one guest



Day 1

Time	Activity	Location
10:30	Check in	Marriott Grosvenor House
12:30	Networking lunch	Marriott Grosvenor House
14:00	Kick-off meeting	Marriott Grosvenor House - one of their 23 event rooms
18:00	Private dining	Wellington Arch on Hyde Park Corner
21:00	Post-dinner drinks	Red Bar at Marriott Grosvenor House

Day 2

Time	Activity	Location
09:00	Bike tour	Past sites such as: Buckingham Palace, Kensington Palace and the Princess Diana Memorial
13:00	Afternoon tea	One of Mayfair's luxury hotels
19:30	Private members club	Annabel's, the Arts Club or the "Palace of Pleasure"

Day 3

Time	Activity	Location
Morning	Shopping	Burlington Arcade, Savile Row, Fortnum & Mason
Afternoon	Check out and depart	Marriott Grosvenor House

Turn this itinerary into a reality.

**Contact London Convention Bureau for
more information.**

conventionbureau@londonandpartners.com